

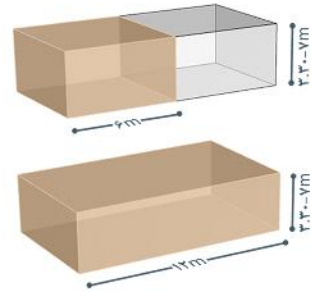
► **About the scheme**

Wahiri means a unit or module or piece. Each Wahiri is a prefabricated piece, which can attach to other Wahiris (unit) and form a building. The dimensions of each prefabricated piece in the plan are 12 x 2.5 meter, which is made in the factory and will be transferred to the site using the transporting utensils. Wahiri prefabricated buildings can be used in residential, hotels, educational, commercial, administrative buildings and even a more advanced version of it can be used in medical buildings.

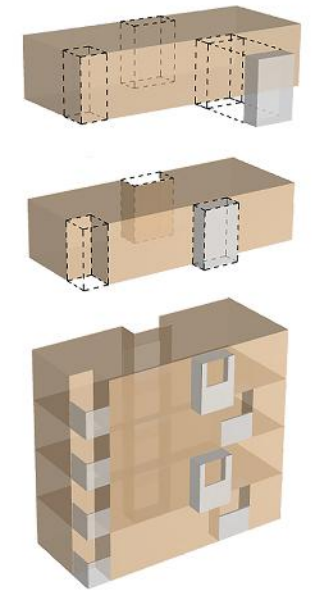
► **The main idea of Wahiri buildings**



► **It is possible to change the dimensions of the span of each Wahiri and the height of the buildings according to the plan**



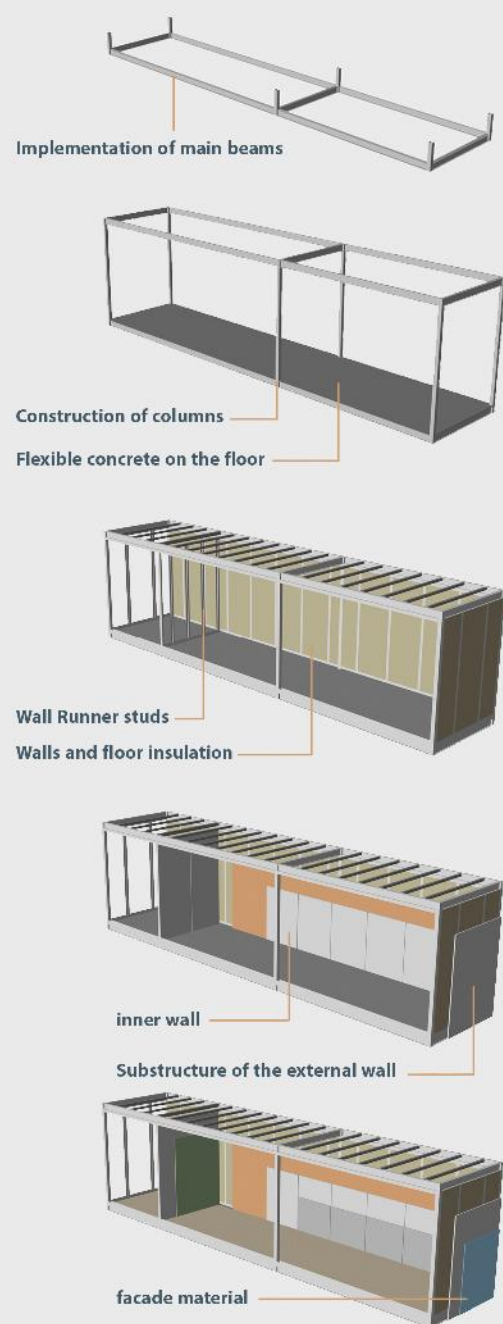
► **Capable to design a variety of visual diversity by adding or subtracting parts of the building**



Assembling and installing the units

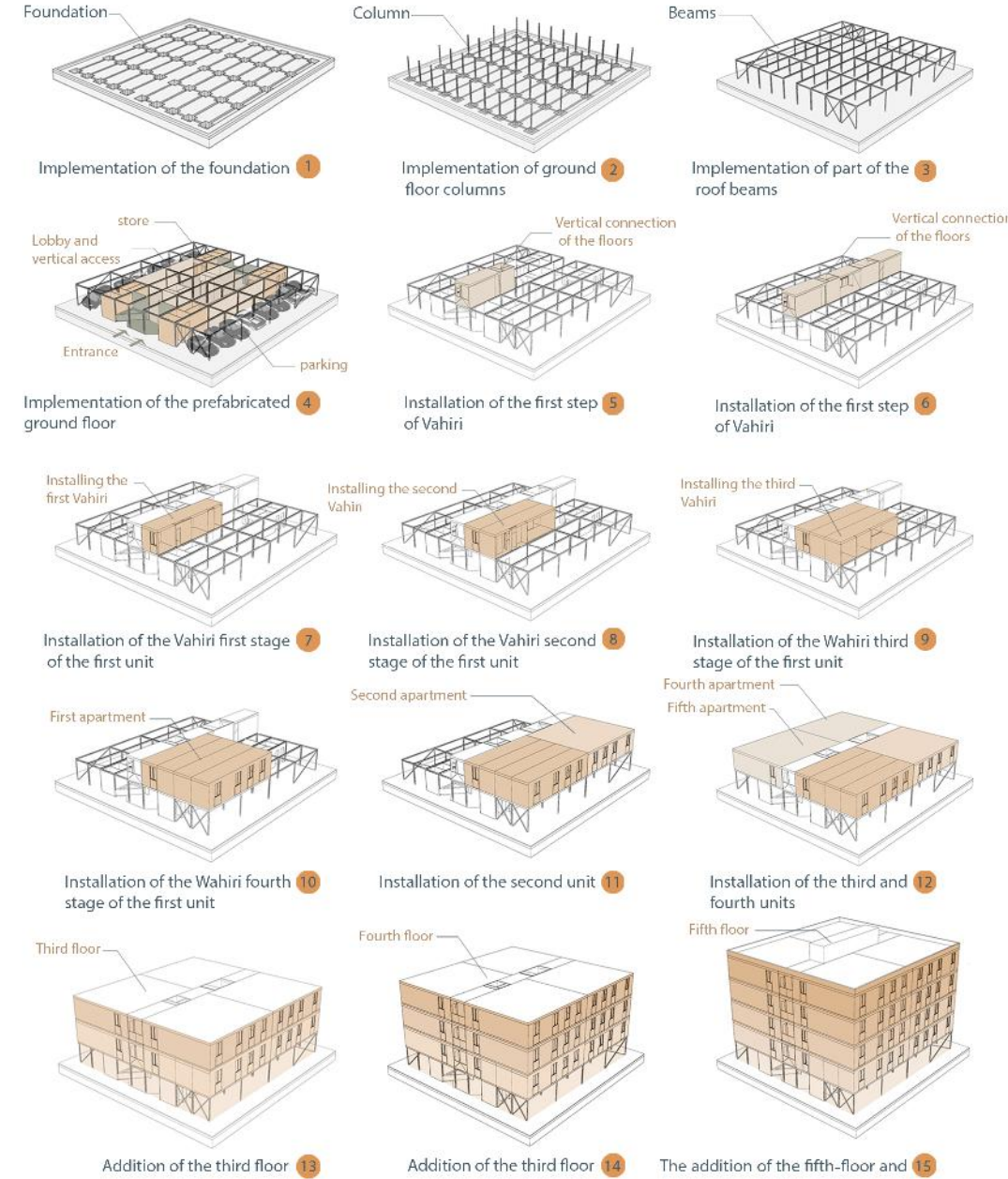
Integrated building

► **Stages of construction**



► **Accomplishments**

- Fast implementation
- High quality
- Providing a fair price
- Applying the last technology
- Longer fire resistance
- Lighter weight
- The highest level of construction execution
- light weight
- Higher earthquake tolerance (used for earthquake areas before and after the earthquake)
- Capable to adapt to different climates
- Portable: capable to be moved from one place to another
- Lower urban disturbances such as noise pollution, traffic, etc. at the project site
- Possibility to recycle the water and air
- Sustainable materials



► **Stages of construction in 5 floors and more**

► **Two-floor industrial building of Couk factory**

